



## Vision

5000croregroup

## MISSION

Winning global customers through innovative pharmaceutical products.

## VALUES

- Winning global customers through innovative pharmaceutical products.
- Consistent profitable performance.
- Innovation to nurture good partnership with customers.
- Responsibility towards environment, safety & health.
- Commitment towards high eststandards of ethics & integrity.
- Valuing the ability to excel, integrity, knowledge ,skills, diversity and teamwork of employees.

## Quality Policy

We at IND-SWIFT deliver *customer* satisfaction by providing quality products for the health of mankind.

We ensure value for money by developing innovative therapies and processes to produce safe, effective and consistent quality products.

We endeavour for continual improvement in our *management* system to create an environment of the mutual respect, transparency and teamwork.

## Facilities

A unique and unmatched excellence in pharmaceuticals manufacturing with highest reliance of product quality attributes is our corporate strength. Ind-Swift's multipurpose, multi location manufacturing set-ups are across spread across the lush-green plains of northern Indian states viz Himachal Pradesh ,Haryana and Jammu and Kashmir .The locations are environmental pollution free and together otterapprox.12lacs sq. ft

Of newly constructed plants with state of the art facilities for pharma manufacturing.

The facilities are built according to current guidelines of USFDA, MHRA, EU ,and WHO ,and accreditations with ISO14000 series standard.

A strong and ever vigilant Quality Assurance System forms The backbone of our continuing compliance to stringent regulatory guidelines, Backed by latest equipments and instrumentation system. We achieve constant compliance to product quality attributes with an enviable cost of efficientIfi6always our strong endeavor to continuously invest in newer products, process technologies and

**ine**  
withallyourmind.  
shhallyourheart.  
w8h.,.....•





look out for new horizons in pharmaceutical business to establish our well earned leadership.

## Equipmeiits

All of the above facilities house the latest , automated equipments, operating with pre-programmed logic controllers and a highly qualified and trained staff to produce products conforming to defined quality attributes.

Some of the examples of these equipments are:

Fully automatic and integrated lines for filling of Ampoules and vials. Dehydrogenating and Sterilizing tunnel. Bottle,(glass /PET) WASHING FILLING SEALING MECHINES.

Heavy duty granulation, blenders

High speed tablet compression machine Tablet Auto coaters

Capsule Filling Inspection and Polishing machines Blister packaging machine (PVC and ALU-ALU)

Product processing under Isolators (for Oncologicals)

All the operations are complementary by a highly efficient classified Air Handling System with *pressure* gradients and an *continuously* operating water generating, storage and distribution system to supply high purity water.

The Manufacturing facilities are strategically grouped so as to offer dedicated environment for the manufacturing of:

General category formulations

Beta lactum

Steroids and hormones ,

Cephalosporins ,

Oncologicals

Soft Gelatin capsules Herbal and Neutraceuticals

**These facilities together produce a diverse range of dosage forms like:**

Oral solutions and suspensions

Dry syrups (General ,beta lactum and Cephalosporins) Tablets with all different technologies

Hard Gelatin Capsules Soft Gelatin Capsules

Liquid and Dry powder

injectables Dermatological

Eye/Eardrops

## Capacity

Ind -Swift Ltd is proud to have an enviable manufacturing capacity to process above range of products.

The current an nualized capacity is:

2300millionTablets

64millionAmpoules

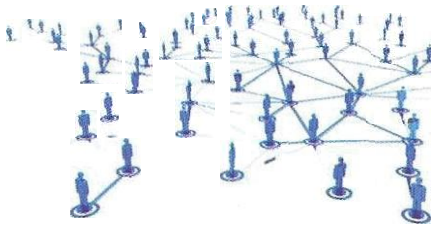
27millionVials

84millionCapsules

18millionDermatologicalproducts 62million Oral liquid bottles

12quipmeiits

We canteach  
experience



ACHIEVEMENT THE DREAM TOGETHER ENTHUSIASM  
ACHIEVEMENT ENTHUSIASM  
DREAM TOGETHER ACHIEVEMENT ENTHUSIASM  
ACHIEVEMENT ENTHUSIASM  
DREAM TOGETHER ACHIEVEMENT ENTHUSIASM  
ACHIEVEMENT ENTHUSIASM  
DREAM TOGETHER ACHIEVEMENT ENTHUSIASM  
ACHIEVEMENT ENTHUSIASM  
DREAM TOGETHER ACHIEVEMENT ENTHUSIASM

---

Welcome To IPDL (A Division of Ind swift)

Marketing Divisions

Ind swift proudly have following Marketing Divisions

- **Ethical Division** : Main Focused on Gynecologist, Pediatrics , Gastroenterology & GP segment having specialized field force of 150 spread across India
- **Q-Den** : Promoted Division with focus on Dermatology segment having a strong field force , 75 spread across India
- **Healthcare Division** : Spread across india with a strong field force of 75 having 250strong product range which includes antibiotics, Anti-inflammatory , Gastroenterology, corticosteroids , Neutraceutical , Dermatology , Cardiac , Diabetic, Respiratory, Anti- allergic etc. etc.

### **Distribution**

Ind swift has strong Distribution base across India with 32 C & F / CSA across India

2500 Distributor / Stockiest

4.5 lac Strong retailer base

Now owing to the demand of the market Ind swift proudly entering into Pharma Franchise based PCD Divisions with the introduction of **IPDL**

**IPDL** a division is based on Pharma base Franchise system . We'll spread across India & will be giving opportunities to establish distributors, stockiest young pharma graduate who want to become & the likes

In the initial phase IPDL entering the market with the strong range of 50 products (Registered Trade Marks) In various therapeutic segments :

- 1) Pain Management
- 2) Anti-biotic
- 3) Anti-Ulcer ants
- 4) Other Gastro intestinal Products
- 5) Neutraceuticals
- 6) Anti-allergic
- 7) Respiratory
- 8) Neurology
- 9) Diabetic
- 10) Cardiac Segment

All these products are manufactured either in house or WHO approved facilities from our manufacturing partners which ensured highest standard of Quality (For which Ind Swift is known par ) & state of art packaging.

A part from above mentioned IPDL will also have a strong Plus 100 products from our Ayurveda range & OTC range to provide you an opportunity to enter into Ayurveda Segment which is the buzz word now a days

En cash this opportunity be a marketing partner & associate yourself with Ind Swift through its marketing Franchise Division IPDL.



# Ind-Swift

Because Life is Precious

## AYURVEDA & HERBAL

### IPDL A DIVISION OF IND-SWIFT

S.No.	Products Name	Composition	Specification	Packing
<b>CAPSULES</b>				
1	Swift Dengue Cure	Papaya Leaf(Carica Papaya)350mg, Giloy (Tinospora Cordifolia)150mg	Cap	100
2	Swiliv Zyme DS	Kasani(Cichorium intybus)90mg , Mandur Bhasam(Bhasam)30mg, Arjuna(Terminalia arjuna)50mg, Kakamachi(Solanum nigrum)50mg, Kasamarda(Cassia Occidentalis)35mg, Biranjasipha(Achillea Millefolium)35mg, Jhavuka(Tamarix gallica)35mg, Makoy(Solanum nigrum)35mg, Bhringraj(Eclipta alba)35mg, Guduchi(Tinospora cordifolia)15mg, Bhui Amla(Phyllanthus niruri)15mg, Punarnava(Boerhavia Diffusa)15mg, Amla (Garcinia pedunculata)15mg, Chitrak(Plumbago Zeylanica)15mg, Pitpapda(Fumaria indica)15mg, Baheda(Terminalia Bellirica)15mg	Cap	100

3	Swift Size-0	Musatka(Cyperus rotundus)30mg, Vayvidanga(Embelia ribes)30mg, Arjuna(Termenelia arjun)50mg, Chitrak mool(Plumbago zeylancia)30mg, Triphala 50mg, Suddha Guggal(Balsamodendron)150mg, Vijaysar(Pterocarpur marsupium)80mg, Trikatu 50mg	Cap	100
4	Swift Stone Out Capsules	Hajrul Yahood Bhasam (Lapis judaicus) 70 mg, Shwet Parpati 70 mg,Sahdevi (Sida rhombifolia) 60 mg,Pashan Bhed (Bergenia ligulata)70 mg,Plash (Butea monosperma)70mg,Shudh Shilajit 15 mg,Gokhru (Tribulus terrestris) 70 mg,Lajjalu (Mimosa pudica) 70 mg & Excipients.	Cap	100
5	Swiliv Zyme Capsules	Kasani 90 mg, Mandur Bhasam 30 mg,Arjuna 50 mg,Kakamachi 50 mg, Kasamarda 35 mg,Biranjasipha35 mg,Jhuvka 35 mg,Makoy 35 mg,Bhringraj 35 mg, Guduchi 15 mg,Bhui Amla 15 mg,Punarnava 15 mg,Amla 15 mg,Pitpada 15 mg, Bhaeda 15 mg	Cap	100
6	Swift Musli Gold Capsules	Safed Musli Extract 150 mg, Ashwagandha Extract 50mg,Javitri 50 mg, shilajit Extract 50 mg,Kapikachhu Extract 50 mg,Amla 50 mg, Samundradosh 50 mg,Gokhru 50mg	Cap	100
7	Swift Size-O Capsules	Musatka 30 mg, Vayvidanga 30 mg, Arjuna 50 mg, Chitrak Mool 30 mg, Suddha Guggal 150 mg, Vijaysar 80 mg, Trikatu 50 mg & Triphala.	Cap	100

8		Sarpagandha(Rauwolfia serpentina)150mg, Shankhpushpi(Convulvulus Pluricaulis)100mg, Sandalwood(Santalum Album)50mg, Lodhra (Symplocos Racemosa)50mg, Guduchi(Tinospora Cordifolia)50mg, Pippali(Piper Longum)50mg, Arjuna(Terminalia Arjuna)50mg, Jyotishmati(Celastrus Paniculatus)50mg	Cap	60,100
9	Pain swift Capsules	Each 500gm Capsules contains: salai Guggal 100mg, Guggal shudha 100mg, Sonth 50mg, Ashwagandha 50mg, Lahsun Shudha 50mg, Suranjan 50mg, Shatapushpa 50mg, Halsi extract 40mg & Rasna 10mg	Cap	100
10	Pile Swift Capsules	Each capsules contains:Maha neem (Azadirachta indica) 100mg, Naag kesar (Mesua ferrea) 70mg, Haritaki (Terminalia chebula) 40mg, Amla (Phyllanthus emblica)40mg, Bahera (Terminalia bellirica) 40mg, Apamarg (Achyranthes aspera)20mg, Ajmoda (Apium graveolens)20mg, Indrayav (Holarrhena pubescens) 20mg, Khadir (Senegalia catechu)20mg, Nisonth (Operculina turpethum) 40mg, Senna (Senna alexandrina) 40mg, Guggal (Commiphora wightii) 20mg, Shudha Shilajit (Asphaltum Puniabium)20mg, Perval Pisti 10mg	Cap	60,100
11	Swift Shilajeet Gold Capsules	Each capsule Contains :Shatavari (Asparagus Racemosus )90mg, Gokhru (Tribulus terrestris)90mg,Ashwagandha (Withania Somnifera) 50mg,Shudh Shilajit (Asphaitum) 50mg, Safed Musli (Asparagus adscendens) 50mg,Varahikand (Dioscorea bulbifera) 45mg,Vidarikand (Pueraria tuberosa) 45mg, Yashad bhasma 15mg, Dal chinni (Cinnamomum verum) 10mg, Akarkara (Anacyclus pyrethrum) 10mg, Lavang (Syzygium aromaticum) 10mg,Kesar (Crocus sativus) 5mg, Kapoor (Cinnamomum camphora)9mg, Rajat bhasma 58mg, Nutmeg oil 3mg, Swaran bhasama 1mg, Minerals (Bhasma, Pishti) Nil	Cap	100
12	Swift Ashwagandha Capsules	Each capsules contains: ashwagandha Extract 500mg & Preservatives	Cap	100



13	Swift Braino-Fit Capsules	Each capsules contains: Methi 50mg, Saunf 40mg, Ashwagandha 65mg, Shatawari 75mg, Safed Moosli 65mg, Barli 40mg, Vidarkhand 60mg, Kalonji 30mg, Pudina 40mg, Lodhera 35mg	Cap	60
14	Hangover	Khajura (Phoenix dactylifera)* Fr- 47mg, Kasni (Cichorium Intybus)# Sd 47mg, Yavatikta (Andrographis paniculata)# Wh.Pl. 47mg, Draksha (Vitisvinifera)*Fr 47mg, Bhumiamlaki (Phyllanthus Amarus)#Wh.Pl. 31 mg, Amalakai (Embllica officinalis)*Fr. 31mg	Cap	10
15	Majitrich cap	Reetha 5.0mg, Amla 5.0mg, Bhrinraj 5.0mg, Heena 5.0mg, Shikakai 5.0mg, Neem 5.0mg, Jatamansi 5.0mg, Tagar 5.0mg, Bakuchi 5.0mg, Haldi 5.0mg, Giloy 5.0mg, Ghritkumari 5.0mg, Amla Haldi 5.0mg	Cap	100

## GEL

16	Pain swift Gel	Winter green oil 15%w/w, Pudina phool 5%w/w, Terpene oil 5% w/w, Nilgiri oil 2%w/w cream base	Gel	25g/10g
----	----------------	---	-----	---------

## JUICE

17	Glufit-Herbal Juice	Neem(Azadirachta Indica) 2ml, Karela(Momordica Charantia Linn)2ml, Jamun(Eugenia Jamnolana)2ml, Gudmar(Gymnema Sylvestre)2ml, Methi(Trigonella Foenum Graecum)2ml	Juice	500 ML
18	Aloe vera Juice	Aloevera(Aloe Barbadensis)10gm	Juice	500 ML

19	Amla Juice	Amla( <i>Emblica Officinalis</i> )750mg, Panch Tulsi( <i>Ocimum Sanctum</i> Linn)300mg, Aloevera( <i>Aloe</i> <i>Barbadensis</i> )176mg , Xntum q.s	Juice	500 ML
20	Ashwagandha Juice	Arjun chhal( <i>Terminalia</i> <i>Arjuna</i> )500mg, Ashwagandha( <i>Withania</i> <i>Somnifera</i> )200mg, Jatamansi( <i>Nardostachys</i> <i>jatamansi</i> )200mg, Shatavari ( <i>Asparagus racemosus</i> )200mg, Kaunch Beej ( <i>Mucuna</i> <i>pruriens</i> )200mg, Vidarikand ( <i>Pueraria tuberosa</i> )200mg, Munakka ( <i>Vitis Vinifera</i> ) 100mg, Giloy ( <i>Tinospora Cardifolia</i> )100mg, Saunf( <i>Foeniculum vulgare</i> )100mg	Juice	500 ML
21	Heart Care Juice	Ashwagandha( <i>Withania</i> <i>Somnifera</i> )200mg, Munnaka( <i>Vitis</i> <i>vinifera</i> )100mg, Tulsi( <i>Ocimum</i> <i>tenuiflorum</i> )100mg, Saunf( <i>Foeniculum Vulgare</i> )100mg, Arjuna( <i>Terminalia Arjuna</i> )500mg, Shankhpushpi( <i>Convolvulus</i> <i>pluricaulis</i> )200mg, Brahmi( <i>Brahmi</i> <i>monnieri</i> )200mg, Sarpagandha( <i>Rauvolfia</i> <i>Serpentina</i> )200mg, Jatamansi( <i>Nardostachys</i> <i>Jatamansi</i> )200mg	Juice	500 ML
22	Jamun Karela Juice	Neem( <i>Azadirachta Indica</i> ) 200mg, Karela( <i>Momordica Charantia</i> Linn)750mg, Jamun( <i>Eugenia</i> <i>Jamunolana</i> )1000mg, Gudmar( <i>Gymnema</i> <i>Sylvestre</i> )250mg, Methi( <i>Trigonella</i> <i>Foenumgraecum</i> )250mg	Juice	500 ML
23	Musli Gold Juice	Safed musli( <i>Asparagus</i> <i>adscendens</i> )300mg, Vidarikand( <i>Pueraria</i> <i>tuberosa</i> )300mg, Shatavar( <i>Asparagus</i> <i>racemosus</i> )300mg, Ashwagandha( <i>Withania</i> <i>somnifera</i> )300mg, Bhringraj( <i>Eclipta</i> <i>alba</i> )300mg, Brahmi( <i>Bacopa</i>	Juice	500 ML

		Monnieri)300mg, Trikatu(A.S.S.)150mg, Triphala(A.S.S.)150mg, Shankpushpi(Convulvulus pluricaulis)300mg, Vidhara Beej(Argyreia Specios)200MG,Gorkhu(Tribulus terrestris)100mg, Bala panchang(Sida cardifolia)100mg		
24	Noni Juice	Noni fruit Ras(Morinda citrifolia)0.95gm, Kokum Fruit Ras(Garcinia Indica)0.03gm	Juice	500 ML
25	Triphala Plus Juice	Amla(Embliac officinalis)300mg, Harar(Terminalia chebula)300mg, Bahera(Terminalia belerica)300mg, Tulsi(Ocimum Sanctum)50mg, Giloy(Tinospora Cordifolia)50mg	Juice	500 ML

## LIQUID

26	Swidril Honey	Each 5ml contain Herbal extract From derived from : Piper longum (Long) 10 mg, Adhatoda vasica (Vasica)100mg, Ocimum tenuiflorum (Tulsi) 100mg, Glycyrrhiza glabra (Mulethi) 100mg, Eucalyptus globulus (Eucalptus Oil) 0.01 ml, Mentha (Pudina) 2mg, Zingiber Offianale (Ginger) 50mg, Piper longum (Pippali) 50mg, Glycyrrhiza Gabra (licorice) 100mg, Naushader 50mg,Viola odorata (Banaphsa) 100mg, Abies spectabilis (Talispatra) 50mg, Honey 1750mg, Piper Nigrum (Marica) 50mg	Liquid	100 ML
27	Tulsi Drops	Shyam Tulsi 50mg, Van Tulsi 50mg, Ram Tulsi 50mg, Krishna Tulsi 50mg, Kali Tulsi 50mg	Liquid	30 ML
28	Swiliv zyme Drops	Capparis spinosa (Himsra)17mg, Cichorium endivia (Kasani)17mg, Solanum nigrum (Kakamachi)8mg, Terminalia arjuna (Arjuna)8mg, Cassia occidentalism (Kasamarda)4mg, Achilea milleliem (Biranjasipha) 4mg, Tamarix gallica (Jhavuaka)4mg, Eclipta prostrata (Bhringraj) 75mg, Phyllanthus niruri (Bhuiamla) 75mg, Boerhaavia diffusa (Punervava) 75mg, Tinospora cordifolia (Giloy) 75mg,	Liquid	30 ML

Berberis aristata (Daruhaldi)  
37.5mg, Raphanus sativus (Mooli)  
37.5Mg, Phyllanthus emblica (Amla)  
37.5mg, Plumbago zeylanica  
(Chitrak Mool) 37.5mg, Embelia  
ribes (Vaividang) 37.5mg,  
Terminalia chebula (Harar) 37.5mg,  
Fumaria Indica (Pitpara) 75mg

## OIL

29	<b>Majitrich Oil</b>	Simmondsia chinensis (Jjoba Oil) , Prunus Amygdalus Dulcis (Sweet Almond) , Triticum vulgare (Wheat Germ Oil) , Juglans regia (Walnut Oil), Eclipta prostrata (Bringraj Oil),Olea europaea (Olive Oil) <b>(Decoction of Bhringraj , Brahmi , Amla , Methi, Sikakai, Aloe vera, Curry leaves, Habiscus, rosemerry, Eucalyptus, Ginko Biloba, Guarana , Lemon Grass, Oats, Pipprament , Safflower Onion) 100ml</b>	Oil	100 ML
30	<b>Pain Swift Oil</b>	Rasna ( Pluchea lanceolata) 150mg, Eranda (Ricinus communis) 150mg, Nirgundi (Vitex negundo)250mg, Ajwain (Trachyspermum ammi)50mg, Gandhaprasami ( Paederia foetida) 50mg, Lahsone (Allium sativum)100mg, Devdaru (Cedrus deodara)100mg, Padmakh ( Prunus Cerasoides )50mg, Kadamb (Neolamarckia cadamba) 100mg, Kuchila (Strychnos nux-vomica) 80mg, Ashwagandha (withania somnifera )120mg, Guggulu (Commiphora wightii)50mg, Camphor Oil (15% w/w, Menthol (Peppermint) 15% w/w, Capsicum Oil (Capsicum annum)0.5% w/w, Oil of wintergreen 25%w/w, Eucalyptus oil 2.5%w/w and Till oil	Oil	60 ML

31	Painswift Oil	Rasna ( <i>Pluchea lanceolata</i> ) 150mg, Eranda ( <i>Ricinus communis</i> ) 150mg, Nirgundi ( <i>Vitex negundo</i> )250mg, Ajwain ( <i>Trachyspermum ammi</i> )50mg, Gandhaprasami ( <i>Paederia foetida</i> ) 50mg, Lahsone ( <i>Allium sativum</i> )100mg, Devdaru ( <i>Cedrus deodara</i> )100mg, Padmara ( <i>Prunus Amygloides</i> ) ,Kadamb ( <i>Anthocephalus Kadamb</i> ) , Kuchila ( <i>Strychnos Nux Vomica</i> ), Ashwagandha ( <i>Withania Somnifera</i> )120mg, Gugglu ( <i>Balsamdendron Commiphora</i> ) 50mg, Camphor Oil ( Camphorn )15% w/w , Menthol ( <i>Mentha Arvensis</i> ) 15%w/w , Capsicum Oil ( <i>Capsicum Annuum</i> ) 0.5% W/w, Oil of Wintergreen ( <i>Gultheria Fragrantissima</i> ) 25% w/w, Eucalyptus oil ( <i>Eucalyptus Globulus</i> ) 2.5% w/w, Til Oil ( <i>Sesamum indicum</i> )q.s	Oil	100 ml
----	---------------	---	-----	--------

## PASTE

32	Toss Herbal	Potassium Nitrate BP..5% w/w	Paste	100 G
33	Toss Herbal	Potassium Nitrate BP..5% w/w	Paste	100 G

## POWDER

34	Natulooz	Bael ( <i>Aegle mamelor Fr.</i> ) 0.8gm,Amla ( <i>Phyllanthus emblica Fr.</i> )0.8gm, Isabgol ( <i>Plantago ovate Sd.</i> )0.8 gm,Baheda( <i>Terminalia billerica WH. Pl.</i> )0.5gm, Senna ( <i>Cassia angustifolia Lf.</i> )0.7gm, Harar ( <i>Terminalia chebula Wh.Pl.</i> ) 0.4gm, Punamava ( <i>Boerhaavia diffusa Rt.</i> )1.0gm	Powder	100 GM
35	Natulooz Formulation) ( New	Each 10g Powder Contains : Plantago Ovata (Isabgol) 5g , Cassia fistula (Amaltas) 6g, Aegle marmelos (Bael) .8g , Phyllanthus emblica (Amla) .8g, Terminalia	Powder	100 GM

		bellirica (Behara) .6g, Cassia angustifolia (Seena).8g,Terminalia chebula (Harar) .6g, Foeniculum vulgare(Saunf) .25g , Rosa rubiginosa (Glulabdal) .05 g		
36	Glufit Powder	Each 10gm contains: Azadirachta indica (Neem extract) 50mg, Eugenia jambolana (jamun extract) 50mg , Aegle marmelos (Bel extract) 50mg, Momordica charantia Linn (Karela extract) 50mg, Trigonella Foenum Graecum (Methi extract) 50mg, Gymnema sylvestre (Gudmar extract ) 50mg, Vachellia nilotica (Babbul extract) 50mg, Allium cepa (Onion extract ) 200mg, Allium sativum (Garlic extract) 50mg, Aloe barbadensis (Aloe vera) 100mg, Ocimum tenuiflorum (Tulsi ) 50mg, Holi basil 50 mg, Tinospora cordifolia (Guduchi) 50mg,Zingiber officinale (Ginger)50mg, Glycyrrhiza glabra (Mulethi) 50mg, Pippur nigrum (Kali mirch) 50mg, Emblica officinalis (Triphala)50mg, Caesalpinia banduceila 30mg, Capparis desidua 30mg, Coccinia grandis ( Coccinia indica)30mg	Powder	200 G

## SHAMPOO

37	Majitrich Shampoo	Phyllanthus emblica (Amla) 100mg, Sapindus mukorossi (Reetha) 100mg, Acacia concinna (Sikakai) 100mg, Lawsonia inermis (Heena) 100mg, Eclipta prostrata (Bringraj) 100mg,Azadirachta indica (Neem) 100mg, Nardostachys jatamansi (Jatamansi) 50mg, Curcuma longa (Haldi) 50mg,Tinospora cordifolia (Giloy) 50mg, Psoralea corylifolia (Bakuchi) 50mg, Valeriana jatamansi (Tagor) 50mg, Aloe barbadensis (Ghrit Kumari) 50mg, Amla Haldi 50mg	Shampoo	100 ML
----	-------------------	---	---------	--------

## SOAP

38	Acnewash	salicylic Acid IP(1.0%)	Soap	75 G
39	Neem	Glycerine IP 1.00%w/w, Viatmin-W IP 0.25%w/w, Neem Oil 1.00%w/w, Aloe vera 1.00%w/w	Soap	75 G
40	Neem & Aloe vera	Aloe vera 0.2%w/w, Neem Ext 0.1%w/w, Soap noodle q.s., Fragrance & Excipients q.s.	Soap	75 G

## SYRUP

41	Swift Raktha Safi	Rubia Cordifolia (Manjistha) 500 mg, Acacia catechu ( Khair) 200 mg ,Berberies aristata (Daruhaldi ) 200 mg, Chirayata (Swerita Chirayata)100 mg, Kalmegh (Andrographis paniculata)200 mg,Pittpapra (Fumaria Indica) 200 mg, Hasar (Terminalia chebula) 600 mg, Guduchi (Tinospora Cordifolia) 200 mg, Gorakhmundi ( Sphaeranthus indicus) 600 mg , Arusa (Adhatoda Vasica) 400 mg	Syrup	225 ML
42	Stone Out	Saxifarga ligulata(Pashanbhed)450 mg,Dolichos bilforus (Kulthi ) 150 mg, Crataeva nurvala (Varun chhal )200mg, Santalum album (Chandan ) 150mg, Parmelia perlata (Patthar pholl ) 300 mg,Tribulus Terrestris (Gokhru Chhota) 450mg, Cucumis Utilissinus(kakri Beej ) 100mg, Piper Cubeba (Sheetal Chini )100mg, Achyranthes aspera(Apamarg ) 250mg,Phyllanthus niruri (Bhumi Amla) 100mg, Cichorium endivia (Kasni Beej )50mg, solanum nigrum (Makoy)150 mg, Raphanus sativus(Muli Kashar)100mg, Yavak kashar (Potasli carbonas)100 mg	Syrup	225 ML

43	Swiliv Zyme MPS	<p>Eclipta alba (Bhringraj) 500mg, Tephrosai purpuria ( Surpankha) 400mg, Andrographis paniculata (Kalmegh) 200mg, Fumaria indica (Pitpara) 200mg, Phyllanthus niruri (Bhulamia) 200mg, Glycyrrhiza glabra(Mulethi) 200mg, Trichosanthes dioce (Patolpaira) 150mg, Ocimum sanctum (Tulsi) 150mg, Cichorium intybus (Kasni) 150mg, Tinospora cardifolia ( Giloy) 150mg, Terminalia Chebula (Harad) 100mg, Terminalia Belenca ( Behera) 100mg, Phyllanthus emblica (Amla) 100mg, Picorhiza Kurroa (Kutki) 100mg, Plumbago zaytanica (Chitrak Mool) 100mg, Anethum Sowa (Sowa) 100mg, Cuminum Cyminum (Jeera) 100mg, Embelia Ribes (Viavidang) 200mg, Mentha Piperita ( Pudina) 100mg, Berberis aristata ( Daruhaldi) 100mg &amp; Solanum nigrum (Makoi) 200mg</p>	Syrup	225 ML
43	Ashoka Cordial	<p>Ashok (Saraca Indica)500mg, Dashmool 400mg, Shatawar(Asparagus Recemosa) 100mg, Motha (Cyperus Rotundus)100mg, Jamun(Eugenia Jambolana) 98mg, Behera(Terminalia Belerica) 30mg, Kamal(Nelumbium Speciosum) 30mg, Ashwagandha(Withania Somnifera) 20mg, Amla(Emblica officinalis) 20mg, Lodhra(Symplocos Racemosa) 20mg, Harar(Terminalia Chebula) 20mg, Jeera(Cuminum Cyminum)20mg, Bhringraj(Eclipta Alba)20mg, Sonth(Zingiber Officinale)20mg, Khair(Acacia Catechu)20mg, Bel(Aegle Marmelos)20mg, Samer(Bombax Malabaricum)20mg, Bargad(Ficus Bengalensis) 20mg, Aam (Mangifera indica)20mg, Bala (Sida Cordifolia)20mg, Jatamansi(Nardostachys jatamansi)20mg, Devdaru (Cedrus Deodara) 7mg, Vidanga (Embelia Ribes)5mg, Anantmool (Hemidesmus Indicus)5mg, Giloy</p>	Syrup	100 ml



		(Tinospora Cordifolia)5mg, Pippli (Piper Longum)5mg, Taj (Cinnamomum Cassia)5mg, Lavang (Caryophyllus Aromaticus)5mg, Nagkeshar (Mesua Ferrea)5mg, Bajguriya (Bryonia Epigoea)2mg, Vacha (Acorus Calamus)2mg, Nisot (Ipomoea Turpethum)2mg, Kankol(Piper Cubeba)2mg, Chirayta(Swertia Chirata) 1mg, Daruhaldi (Berberis Aristata)1mg, Kasis Bhasam 10mg		
44	Ashoka Cordial	Ashok (Saraca Indica)500mg, Dashmool 400mg, Shatawar(Asparagus Recemosa) 100mg, Motha (Cyperus Rotundus)100mg, Jamun(Eugenia Jambolana) 98mg, Behera(Terminalia Belerica) 30mg, Kamal(Nelumbium Speciosum) 30mg,Ashwagandha(Withania Somnifera) 20mg, Amla(Emblica officinalis) 20mg,Lodhra(Symplocos Racemosa) 20mg, Harar(Terminalia Chebula) 20mg, Jeera(Cuminum Cyminum)20mg, Bhringraj(Eclipta Alba)20mg,Sonth(Zingiber Officinale)20mg,Khair(Acacia Catechu)20mg, Bel(Aegle Marmelos)20mg, Samer(Bombax Malabaricum)20mg,Bargad(Ficus Bengalensis) 20mg,Aam (Mangifera indica)20mg, Bala (Sida Cordifolia)20mg, Jatamansi(Nardostachys jatamansi)20mg, Devdaru (Cedrus Deodara) 7mg, Vidanga (Embelia Ribes)5mg, Anantmool (Hemidesmus Indicus)5mg, Giloy (Tinospora Cordifolia)5mg, Pippli (Piper Longum)5mg, Taj (Cinnamomum Cassia)5mg, Lavang (Caryophyllus Aromaticus)5mg, Nagkeshar (Mesua Ferrea)5mg, Bajguriya (Bryonia Epigoea)2mg, Vacha (Acorus Calamus)2mg, Nisot	Syrup	450 ML

		(Ipomoea Turpethum)2mg, Kankol(Piper Cubeba)2mg, Chirayta(Swertia Chirata) 1mg, Daruhaldi (Berberis Aristata)1mg, Kasis Bhasam 10mg		
45	Benper	Ashwagandha(Withania Somnifera)200mg, Munnaka(Vitis Vinifera)100mg, Mulethi(Glycyrrhiza glabra)100mg, Saunf(Foeniculum vulgare)100mg,Arjun(Terminalia Arjuna)500mg, Shankpushpi(Convulvulus pluricaulis)200mg, Brahmi (Bacopa monnieri)200mg, Jatamansi(Nardostachys Jatamansi)200mg, Sarpagandha(Rauvolfia serpentina)200mg	Syrup	225 ML
46	Gaszyme	Arjun (Terminalia arjuna, Bk.) 400mg, Ashwagandha (Withania somnifera ,Rt 300mg, Rohitak(Tecomella undulate,Bk.)200mg, Bhrigraja(Eclipta alba,Wh.Pl.)400mg, Punarnava (Boerhaavia diffusa,Rt)250mg, Sharpunkha (Tephrosia purpurea) 400mg, Chirayata (Swertia Chirata, Wh.PL.) 300MG, kalmegh (Andrographis paniculata Wh. Pl) 200mg, Makoi (Solanum nigrum, Fr.) 200mg, Vidang (Embelia Ribes) 200mg, Pitt Papra (Fumaria indica ,Wh.Pl.)200mg, Bhumi amla (Phyllanthus niuri, Wh.Pl.)200mg, Daru haldi (Berberis species,Rz.)100mg, Punarnava	Syrup	225 ML

		(Boerhaavia diffusa,Rt.)100mg, Tulsi (Ocimum sanctum ,Lf.) 100mg, Kasani (Cichorium intybus) 100mg, Giloy (Tinospora cardifolia,St)100mg, Harad (Terminalia chebula ,Fr.)100mg, Beheda (Terminalia bellirica,Fr.)100mg, Amla (Phyllanthus emblica,Fr.)100mg, Kutki (Picrorhiza kurroa, Bk.)100mg, Chitrak mool (Plumbago zeylanica,Rt.)100		
47	Hemonika	Each 15ml contain :Symplocos racemosa, st bk (Lodhra) 750mg, Anantmool Hemnidismus indicus, rt (Anantmool) 430mg, Rubia cordifolia, st (Manjith) 430mg, Sida cordifolia, wh pl (Bala) 320mg,Bacopa monnieri, wh pl (Brahmi) 320 mg, Tribulus terrestris, fr (Gokhru) 320mg, Convolvulus pluricaulis, wh pl( Shankhpushpi) 320mg, Curculigo orchioides, r2 (Musali) 250mg , Saraca indica, st bk (Ashok) 215, Boerhaavia diffusa, rt (Punarnava ) 215mg, Diplocyclos palmatus, wh pl (Shivlingi) 215mg, Withania somnifera, rt (Asgand) 150mg, Sphaeranthus indicus, fi (Gorakhmundi ) 125mg, Asparagus racemosus, rt (Shatavar) 125mg, Acorus calamas, rz (Bach) 100mg, Barberis aristata, st (Daruhaldi ) 100mg, Dhai (woodfordia fruticosa. fi (Dhai) 100mg, Glycyrrhiza glabra, rt (Mulethi ) 100mg, Gmelina arborea, st bk (Gambhari ) 65mg, Hibiscus rosa sinensis, fl (Gudhal) 65mg, Cyperus rotundus, rz (Nagarmotha) 35mg, Solanum xanthocarpurn, wh pl ( Kateri ) 35mg, nymphaea alba, fl (Nilofur) 35mg, Butea monosperma,fi (Palash ) 35mg,	Syrup	225 ml
48	Kufchil	Vasaka(Adhatoda vasica)500mg, Tulsi(Ocimum sanctum Lf.)100mg,Kantakari(Solanum xanthocarpum)100mg, Mulethi(Glycyrrhiza glabra	Syrup	100 ML

		St.)150mg, Behada(Terminalia bellirica)100mg, Kulanjan(Alpinla galangal Rt.)50mg, kakdasighi(Rosmarinus officialnalis)50mg, Vekhand(Calamus Root)30mg, Dalchini(Cinnamomum verum)20mg, Pippali(Pipur longum)20mg, Sonth(Zingiber officinale St.)20mg, Kali mirch(Piper nigrum)20mg		
49	Pain swift Syrup	Dashmul(A.S.S.)4gm, Ashwagandha (Withania Somnifera) 4g, Vidhara(Argyrea nervosa) 4g, Guggal (Commiphora wightii)5g, Erand mul (Ricinus communis)3g, Sonth (Zingiber officinale)3g, Rasna (Pluchea lanceolata)3g, Nirgundi (Vitex negundo) 3g, Kuchla (Strychnos nux-vomica) 5g, Punarnava (Boerhavia diffusa) 5g, Rasona (Allium sativum Linn.) 3g, Chop 3g, Ajwain (Trachyspermum ammi)3g & Preservatives	Syrup	225 ML
50	Pile Swift Syrup	Rsonth(I.berberes)50mg, Haradbdi(T.chebula)50mg, Kali mirch(P.Nigrum)30gm, Belgiri(A.Marmilos)60mg, Guggal(B.bendron mukul)50mg, Chitrak(P.Zeylancia)25mg, Sonth (Z.officinate)25mg, Pipal(P.Longum)30mg, Dantimul(J.montana)40mg, Adusa(A.vasica)50mg, Karanj(P.glabra)50mg	Syrup	225 ML
51	Braino-Fit Syrup	Convolvulus pluricaulis(Sankhpushpi)600mg, Bacopa monnieri ( Brahmi)400mg, Acorus calamus (Bacha)200mg, Nardostachys jatamanshi (Jatamanshi)100mg , Withania somnifera (Ashwagandha)500mg, Asparagusracemosus ( Satawari)100mg, Glycyrrhiza glabra (Yashti madhu)100mg, Valeriana wallichii (Tagar)200mg, Andropogon muricatus (Khus Khus)150mg,Celastrus paniculatus (Jyotismati)150mg, Terminalia chebula (Harar)175mg, Terminalia belerica (Bahera)175mg, Emblica	Syrup	225 ML

		officinalis (Amla)175mg		
52	Heart Care Syrup	Ashwagandha(Withania Somnifera)200mg, Munnaka(Vitis Vinifera)100mg, Tulsi (Ocimum tenuiflorum),Saunf(Foeniculum vulgare)100mg,Arjun(Terminalia Arjuna)500mg, Shankpushpi(Convulvulus pluricaulis)200mg, Brahmi (Bacopa monnieri)200mg, Sargandha(Rauvolfia Serpentina)200mg, Jatamansi(Nardostachys jatamansi)200mg	Syrup	225 ML
53	Hem Asha Syrup	Ashok Chall (Saraca asoca ) 500mg, Aloe vera ( Aloe barbadensis miller ) 317 mg, Lodh (Symplocos racemosa) 264mg, Ulat kamble (Abroma augusta) 264mg, Vasa Patra (Adhatoda vasica) 264mg, Amaltas gudha ( Cassia fistula) 211mg, Amla (Emblica officinalis)211mg, Arjuna (Terminalia arjuna) 211mg, Dhatki (Woodfordia fruticosa) 211mg, Jatamansi (Nardostachys jatamansi) 211mg, Sonth ( Zingiber officinale) 211mg, Shatavari (Asparagus racemosus) 211mg, Aajmod (Carum roxburghianum) 158mg, Ajwain (Trachyspermum ammi) 158mg, Ashwagandha ( Withania somnifera) 158mg, Nag kaser ( Mesua ferria) 158mg, Dashmula (A.F.I) 125mg, Ceylon leadwort (Plumbago zeylanica) 90mg, European wine grape (Vitis vinifera)	Syrup	300 ML
54	Janam Ghutti	Ficus carica(Anjeer)150mg, Vitis Vinifera (Draksha)150mg, Emblica Ribes (Vidanga)150mg, Cassia anguistifolia (Senna)100mg, Acorus calamus (Vach)145mg, Butea frondosa (Palasa)145mg,Cassia Fistula (Amaltas)100mg, Zizyphus sativa (Unnab)45mg,Foeniculum	Syrup	60 ML

		vulgare ( Saunf)20mg, Carum Copticum (Ajwain)100mg, Rosa centifolia (Gulab)40mg, Madhu(Honey)1.00ml		
55	Musli Gold Syrup	Safed musli(Asparagus adscendens)300mg, Vidarikand(Pueraria tuberosa)300mg, Shatavar(Asparagus racemosus)300mg, Ashwagandha(Withania somnifera)300mg, Bhringraj(Eclipta alba)300mg, Brahmi(Bacopa Monnieri)300mg, Trikatu(A.S.S.)150mg, Triphala(A.S.S.)150mg, Shankhpushpi(Convovulus pluricaulis)300mg, Vidhara beej(Argyreia speciosa)200mg, Gokhru(Tribulus Terrestris)100mg, Bala panchang(Sida cardifolia)100mg	Syrup	225 ML
56	Thyrofit Syrup	Each 10ml contain : Bauhinia variegata (Kanchnar) 200mg,Withania somnifera ( Ashwagandha) 200mg, Bacopa monnieri (Brahmi) 200mg, Commiphora wightii (Guggulu) 200mg, Ginseng (Panax) 200mg, Zingiber officinale (Ginger) 100mg, Triphala 100mg, Trikatu 100mg, Ocimum tenuiflorum (Tulsi) 50mg, Boerhavia diffusa( Punarnava) 100mg, Tribulus terrestris ( Gokshura) 100mg, Shilajit 200mg, Nardostachys jatamansi (Jatamansi) 100mg, Glycyrrhiza glabra (Mulethi) 100mg	Syrup	225 ML
57	Swiliv DS	Bhringraja(Eclipta alba)250mg, Bhumymlaki (Phyllanthus niruri)250mg, Punnarnawa(Boerhaavia diffusa)250mg, Guduchi(Tinospora cordifolia)250mg, Daruharidra(Berberis aristat)250mg, Mulaka (Raphenus sativus Linn.)250mg, Amalaki(Phyllanthus emblica)250mg, Chitraka(Plumbago zeylanica)250mg, Vidanga(Embelia ribes)250mg, Haritaki(Terminalia	Syrup	225ML

		chebula)250mg, Parpata( <i>Fumaria indica</i> )250mg, Kasani( <i>Cichorium intybus</i> )80mg, Kakamachi ( <i>Solanum nigrum</i> ) 80mg, Arjuna( <i>Terminalia arjuna</i> )80mg, Kasamarda( <i>Cassia occidentalis</i> )75mg, Biranjasipha( <i>Achilea millefolium</i> )75mg, Jhavuka( <i>Tamarix gallica</i> )75mg Sugar Base		
58	Swiliv Zyme	Swertia ( <i>Chirayata</i> ) 300mg, Tecoma undulata ( <i>Rohitak</i> ) 200mg, Eclipta prostrata ( <i>Bhringraj</i> ) 200mg, Plumbago indica ( <i>Chitrak Mool</i> ) 100mg, Ocimum tenuiflorum ( <i>Tulsi</i> ) 100mg, Mentha ( <i>Pudina</i> ) 100mg with 14 other ingredients	Syrup	100 ML
59	Swiliv Zyme DS	Eclipta prostrata ( <i>Bhringraj</i> ) 400mg, Tephrosia purpurea ( <i>Sharpunkha</i> ) 400mg, Tecomella Undulata ( <i>Rohitaki Chhal</i> ) 400mg, Terminalia arjuna ( <i>Arjuna</i> ) 400mg, withania somnifera ( <i>Ashwagandha</i> ) 300mg, Boerhavia diffusa ( <i>Punaranava</i> ) 250mg, Swertia ( <i>Chirayata</i> ) 300mg, Andrographis paniculata ( <i>Kalmegh</i> ) 300mg, Solanum nigrum ( <i>Makoi</i> ) 200mg, Embelia ribes ( <i>Vaividang</i> ) 200mg, Fumaria Indica ( <i>Pitpapra</i> ) 200mg, Phyllanthus niruri ( <i>Bhumiamla</i> ) 200mg, Berberis aristata ( <i>Daru haldi</i> ) 100mg, Mentha ( <i>Pudina</i> ) 100mg, Ocimum tenuiflorum ( <i>Tulsi</i> ) 100mg, Cichorium intybus ( <i>Kasni</i> ) 100mg, Tinospora cordifolia ( <i>Giloy</i> ) 100mg, Terminalia chebula ( <i>Harad</i> ) 100mg, Terminalia bellirica ( <i>Baheda</i> )100mg, Phyllanthus emblica ( <i>Amla</i> ) 100mg, Picrorhiza kurrooa ( <i>Kutki</i> ) 100mg, & Plumbago zeylanica ( <i>Chitrak</i> ) 100mg	Syrup	225 ML
60	Size-0 Syrup	Virang( <i>Myrsine Africana</i> )220mg, Harad( <i>Terminalia chebula</i> )150mg, Behra ( <i>terminalia Belirica</i> )150mg, Amla ( <i>Emblica Officinalis</i> )150mg, Ghee Kuwar( <i>Aloe Barbadosis</i> )350mg, Nagar Motha( <i>Cyprus rotundus</i> )250mg, Saunth( <i>Zingiber officinalis</i> )250mg, Jeera( <i>Cuminum Cyminum</i> )190mg, Vachh ( <i>Acorus calamus</i> )220mg,	Syrup	500 ML

		Patha (Cissampelos perrieta)80mg, Khas (Papaver somniferum)125mg, Balamool(Coptis teeta)135mg		
61	Swift Dengue Cure SYRUP	Tinospora cordifolia (Giloy)1000mg, Ocimum tenuiflorum (Tulsi )200mg, Mentha(Pudina)100mg, Azadirachta indica(Neem leaf)50mg,Withania somnifera ( Ashwagandha) 100mg, Chirayata (Swertia) 100mg, Boerhavia diffusa (Punarnava)200mg,Carica papaya (Papaya Leaf)500mg	Syrup	200 ml
62	Size-0 Syrup	Each 10ml Contain (Decoction of Ginger , Long , Black Papper- 150mg ) , (Decoction of Cinnamom , Garlic , Ajwain , Methi- 150mg), Garcenia 150mg, Myrsine Africana (Virang) 220mg, Terminalia chebula (Harad) 150mg, Terminalia belirica (Behra) 150mg, Emblica officinalis (Amla) 150mg, Aloe barbadensis (Ghee kuwar) 350mg, Cyprus rotundus (Nagar motha) 250mg, Zingiber officalnalis (Saunth) 250mg, Cuminum cyminym (Jeera) 190mg, Acorus calamus (Vchh) 220mg, Cissampelos perrieta (Patha) 80mg, Papaver somniferum (Khas) 125mg, Coptis teeta (Balamool) 135mg	Syrup	225 ML
63	Braino- Fit Syrup	Hypericum (St john Wart) 100mg,Ginkgo (Ginko biloba) 50mg , Lovendula (Levendor) 50mg ,Methysticum (Kawa) 50mg, Panax Ginsang 100mg, Matricaria chamomilla (Chamomile) 50 mg, Withania somnifera (Ashwagandha) 100 mg, Crocus sativus (Saffron) 25mg, Bacopa monnieri (Brahmi) 100mg , Convolvulus prostratus (Shankhpushpi) 100mg	Syrup	225ml



64	Hemasha	<p>Saraca asoca (Ashok chall) 500mg, Aloe barbadensis miller (Aloe vera) 317mg, Symplocos racemosa (Lodh) 264mg, Abroma augusta ( Ulat kamble) 264mg, Adhatoda vasica (Vasa patra) 264mg, Cassia fistula (Amaltas gudha) 211mg, Emblica officinalis (Amla) 211mg, Terminalia arjuna (Arjuna) 211mg, Woodfordia fruticosa (Dhatki) 211mg, Nardostachys jatamansi (Jatamansi) 211 mg, Zingiber officinale(Sonth) 211mg, Asparagus racemosus (Shatavari) 211mg, Carum roxburghianum (Aajmod) 158mg, Trachyspermum ammi (Ajwain) 158mg, Withania somnifera (Ashwagandha) 158mg, Mesua ferria (Nag kaser) 158mg, Dashmula (A.F.I.) 125mg, Plumbago zeylanica (Ceylon leadwort) 90mg, Vitis vinifera (European wine grape) 80mg, Cryptolepis buchanani (Indian sarsaparilla) 60mg, Terminalia chebula (Haritaki ) 60mg, Cyperum rotundus (purple nutsedge)40mg, Acacia catechu (Black cutch)25mg, Alhagi pseudalhagi (Camel-thorn) 25mg, Asparagus adscendens 25mg, Berberis lycium (Indian barberry) 25mg, Dioscorea bulbifera (Air yam) 25mg, Pluchea lanceolata (Rasna) 25mg, Pueraria tuberosa (Indian Kudzu) 25mg, Cinnamomum tamala (Indian Cassia) 20mg, Curcuma longa( Haldi) 20mg, Glycyrrhiza glabra (liquorice)20mg, Operculina turpethum (Trivrit) 20mg, Pterocarpus marsupium (Pitsal) 20mg, Terminalia bellirica (baheda) 20mg, Embelia ribes (vaividang) 15mg, Piper chaba (piper chilli) 15mg, Aegle marmelos (bael) 10mg, Areca catechu (Betel-nut Palm) 10mg, Boerhaavia diffusa (Punarnava) 10mg, Callicarpa macrophylla (Priyangu) 10mg, Cedrus deodara (Deodar Cedar) 10mg , Citrullus colocynthis (bitter apple)10mg, Clerodendrum</p>	Syrup	300 ml
----	---------	--	-------	--------

serratum (Bharangi) 10mg,  
Curcuma zedoaria (white  
turmeric)10mg

## TABLET

65	(New)Stone out TAB	Each Tab contains : The extract of Crataeva nurvala (Varun) 200mg, Dolicos Biflorus (Kulthi) 50mg, Raphanous sativus (Muli kashar) 50mg, Achyranthes aspera (Apamarg kashaar) 50mg, Boerhavia diffusa (Punarnava) 50mg, Tribulus terrestris (Gokhru kashaar) 50mg, Lapis judaicus (Harjul yahood bhasma) 70mg, Shwet parpati 70mg, Sahdevi (Sida rhombifolia) 60mg, Pashan bheda (Bergenia ligulata) 70mg	Tab	100
66	Pain Swift TAB	Each Tab contain the extracts of : Salai Guggal (Boswellia serrata) 100mg, Sudha Guggal (Commiphora wightii) 100mg, Vitax nigundo (Chastetree)50mg, Curcuma longa (Turmeric) 50mg, Zingiber officinale (Ginger) 50mg, Withania somnifera(	Tab	100

		Ashwagandha) 50mg, Allium Sativum (Garlic) 50mg, Pluchea lanceolata (Rasna) 10mg, Glycyrrhiza glabra (Licorice) 40mg, Salix (Willow Bark) 50mg, Harpagophytum (Devil's claw) 50mg		
67	Shilajit Gold	Each Tab contain : Asphaltum Punjabanum (Shudh shilajit) 500mg, Panax ginseng (Jinsung) 400 mg, L arginine 100mg, Tribulus Terrestris (Gokhru) 100mg, Crocus sativus (Kesar) 50mg, Gokhru 100mg, Mucuna pruriens (Kaunch) 100mg, Phoenix dactylifera (Dates) 100mg, Allium sativum (Garlic) 100mg, Swaran Bhasma 50mg	Tab	30
68	Musli Gold Tab	Chlorophytum borivilianum (Safed Musli) 200mg, Curculigo orchioides (Kali Musli) 200mg, Asparagus racemosus (Satavar) 100mg, Shatavari 100mg, withania somnifera (Ashwagandha) 200mg, Glycyrrhiza glabra (Mulethi) 100mg, Ptychopetalum (Muirapuu) 100mg, Lepidium meyenii (Maca) 100, Epimedium (barrenwort) 100mg, Rhodiola Rosica (rose root) 100mg, Myristica (Nutmeg) 100mg, Abelmoschus moschatus (Kasturi) 100mg, Abelmoschus moschatus (Lata kasturi) 100mg, Swaran bhasma 50mg	Tab	30
69	Size-0 Tab	Garcinia gummi-gutta (Garcenia) 150mg, Commiphora wightii (Suddha Guggal) 150mg, Triphala 50mg, Pterocarpus marsupium (Vijaysar) 30mg, Trikatu 50mg (Decoction of Zingiber officinale (Ginger) , Piper longum (long) & Piper nigrum (Black pepper) , Cyperus rotundus (Mustaka) 30mg, Embelia ribes (Vayvidanga) 30mg, Terminalia arjuna (Arjuna) 30mg) (Decoction of Cinnamomum zeylanicum (Cinnamom) , Allium sativum (Garlic) , Trachyspermum ammi (Ajwain) , Trigonella foenum-graecum (Methi) - 50mg) Kalonji 30mg, Aloe barbadensis miller (Aloe	Tab	100

		vera) 30mg		
70	Dengue Cure Tab	Tinospora cordifolia (Giloy) 250g, Carica papaya (Pappaya) 250g, Azadirachta indica (Neem) 25g, Swertia chirayita (Chirayata) 50g, Boerhavia diffusa (Punarnava) 100mg, Ocimum tenuiflorum (Tulsi) 50mg, Ocimum basilicum (Basil) 50mg, Coriandrum sativum (Corriander) 50mg, Phyllanthus emblica (Amla) 50mg, Trigonella foenum -graecum (Fanugreek) 50mg	Tab	100
71	Braino- Fit TAB	Hypericum (St john Wart) 100mg, Ginkgo (Ginko biloba) 50mg , Lovendula (Levendor) 50mg , Methysticum (Kawa) 50mg, Panax Ginsang 100mg, Matricaria chamomilla (Chamomile) 50 mg, Withania somnifera (Ashwagandha) 100 mg, Crocus sativus (Saffron) 25mg, Bacopa monnieri (Brahmi) 100mg , Convolvulus prostratus (Shankpushpi) 100mg	Tab	60
72	Benper TAB	Each tab contains the extract of : Panax 100mg, Rauwolfia serpentina (Sarp Gandha) 100 mg, Convolvulus prostratus (Shankpushpi) 50mg , Santalum album (Sandal wood) 25mg , Symplocos (Lodhra) 25mg, Tinospora cordifolia (Guduchi) 25mg, Piper longum (Pippali) 25mg, Terminalia arjuna (Arjuna) 25mg, Allium Sativum (Garlic) 25mg, Appium 25mg , Terribilus terristeris (Gokharu ) 25mg (Decoction of : 100 mg i.e : Ocimum basilicum (Basil) , Phyllanthus emblica (Amla), Cinnamomum zeylanicum (Cinnamom) , Trachyspermum ammi (Ajwain) , <b>Greet Oat</b> , Zingiber officinale	Tab	100

		(Ginger), Elettaria cardamomum (Cardamom), Bacopa monnieri (Brahmi) , <b>Cymbopogon citratus (Laman Grass)</b> , Curcuma (Turmeric), Withania Somnifera (Ashwagandha) 100mg		
73	Majitrich Tab	The extract oil : Ginkgo Biloba (Ginkgo) 200mg, Eclipta prostrata (Bringraj) 50mg, Phyllanthus emblica (Amla) 25mg, Sapindus mukorossi (Reetha) 25mg, Lawsonia inermis (Henna) 25mg, Amla Haldi 25mg, Allium cepa (Onion) 25mg, Azadirachta indica (Neem) 25mg, Nardostachys jatamansi (Jatamansi) 25mg, Bacopa monnieri (Brahmi) 25mg, Aloe barbadensis (Aloe Vera) 25mg, Trigonella foenum-graecum (Methi) 25mg	Tab	100
74	Thyrofit Tab	Each Tab contain : Bauhinia variegata (Kanchnar) 50mg, Withania somnifera (Ashwagandha) 50mg, Bacopa monnieri (Brahmi) 50mg, Commiphora wightii (Guggulu) 50mg, Ginseng (Panax) 50mg, Zingiber officinale (Ginger) 25mg, Triphala 25mg, Trikatu 25mg, Ocimum tenuiflorum (Tulsi) 25mg, Boerhavia diffusa (Punarnava) 25mg, Tribulus terrestris (Gokshura) 25mg, Shilajit 50mg, Nardostachys jatamansi (Jatamansi) 25mg, Glycyrrhiza glabra (Mulethi) 25mg	Tab	60